

concept  
wiesner hager



© Duo Holding

— grace

areliving



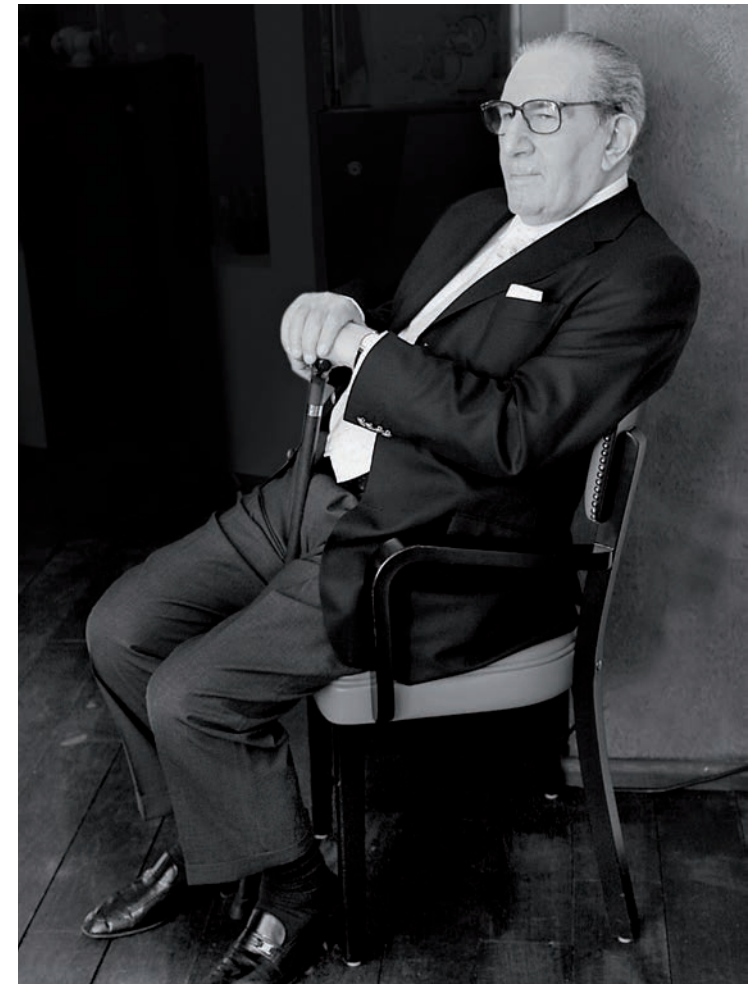


Care Living gives firm support.

# Furnish with feeling.

”

The lifestyles and aspirations of people with special needs owing to old age, illness or disability have changed. Independence and safety are now the central issues. A barrier-free living space with furnishings discreetly tailored to meet individual needs makes life easier and provides safety.



With Care Living, Wiesner-Hager creates stylish living environments that balance functionality with homeliness. One such example is *grace*, the Care Living product family whose design conveys familiarity, safety and security. Ergonomics and comfort are integrated in the furniture as discreetly as the sophisticated technical features hidden in the products of Care Living. Instead, contemporary aesthetics combined with retro elements prevail. The design and function improve the quality of people's lives and also provide the necessary safety. The *grace* wing chair completes the range: integrated loudspeakers allow people to listen to familiar sounds and music from their own world of memory. Furniture is an important aspect in enhancing

mobility and facilitating a largely independent life for as long as possible. The feeling of safety and security radiated by the furniture helps to promote residents' independence. In the field of care this is of paramount importance. Ergonomically shaped chairs enhance seating comfort and may also be conducive to the quicker recovery of patients. Stable constructions and the selection of durable high-grade materials ensure that our products are capable of carrying high loads and can be handled safely. Knob-shaped armrests as standing aids or optional equipment such as linking devices provide for additional safety — one of the most important features in care areas. Thus, furniture becomes an important feel-good factor.



Designing an ambience for dementia patients:

## A manageable living space affords safety and security.

Loss of perception and reduced ability to adapt make it more difficult for residents to find their way in clinical, institution-like settings. People with physical and mental disabilities need a manageable living space that provides safety and security, as well as surroundings that are geared to the needs of everyday life. Wiesner-Hager puts residents first by designing furniture solutions that are tailored around their wishes and needs. A homely atmosphere can be used as a therapeutic instrument to reduce symptoms like aggression, anxiety and unease, which are often the side effects of diseases like dementia. Milieu therapy focuses on the geriatric psychiatric patient as a whole person. An environment adapted to their individual situation and needs helps dementia patients to feel safe and self-confident. Apart from the interior design and furnishings, the ambience also includes the organisational framework (daily routine) and the psycho-social setting.



”

Chronic diseases are the main reason for functional impairment and nursing care dependency. Since such chronic diseases are more common among older people, the number of multimorbid patients is rising, too.

- Immobility, for example because of disuse atrophy
- Pain, acute or chronic

- Paraesthesia
- Delayed convalescence



- Cognitive impairment such as dementia
- Tendency to fall because of dizziness
- Depression, anxiety disorder
- Medication problems

- Shortness of breath
- Angina pectoris caused by cardiac or pulmonary diseases

- Decubitus (bed sores)
- Malnutrition and undernourishment
- High risk of complication, for example because of stoma or the need for renal dialysis
- Incontinence
- Fluid and electrolyte imbalances

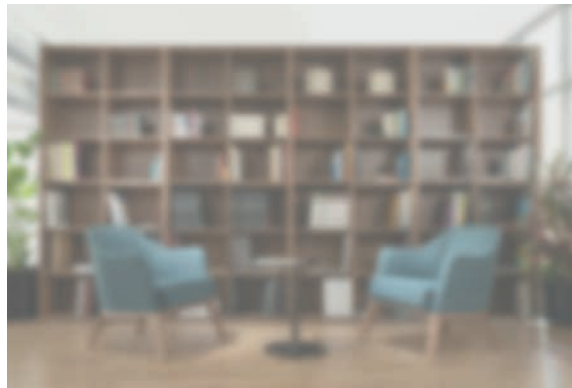




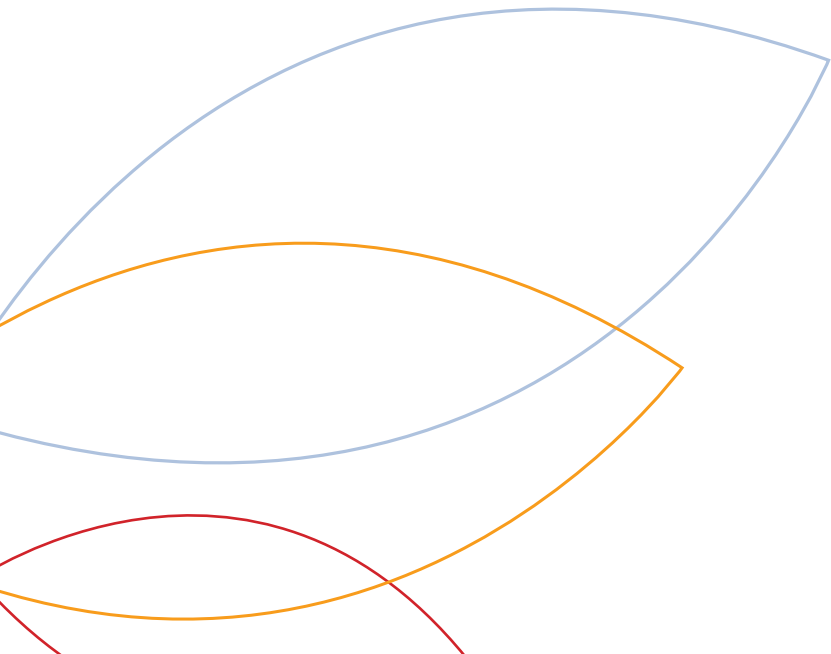
Macular degeneration



Glaucoma



Cataracts



## Colour & light

Powerful colours for improved prospects.

Powerful and contrasting colours facilitate orientation and boost safety by assisting vision and cognition. Besides, colours induce and promote inspiration, activity, and the joy of communicating.

### CARE LIVING COLOUR WORLDS

Colours may have a positive influence on well-being. Clear shades of blue will invoke images of secluded rivers and sea-side holidays thus having a pacifying effect. Fresh green combined with some vibrant nuances of red is invigorating and will strengthen the body's defences. Warm colours are motivating; a canon of yellow, orange and red colours will lift the residents' spirits and put smiles on their faces.

### IN A GOOD LIGHT

It's commonplace knowledge: old age is accompanied by poorer eyesight. Because of the natural decrease in size of the pupil a sixty-year-old needs two to three times as much light to feel comfortable than a twenty-year-old. Age-related shortsightedness, macular degeneration, glaucoma or cataracts make the situation even worse. A clever light concept combines the advantages of daylight and artificial lighting, thus reducing energy costs and enhancing comfort.

### UTILISATION OF DAYLIGHT

- Rooms suffused with daylight offering an unobstructed view to the outside.
- Large windows with curtains of translucent fabrics.

### OPTIMALLY PLANNED ARTIFICIAL LIGHTING

- Indirect light distributed over a large area.
- Bright light is less tiring for the eye.
- Regular distribution of lamps avoiding abrupt transitions between different intensities of light.
- Flexible luminous intensity adaptable to the required level.
- Standard lamps and wall lamps create a cosy atmosphere.

## Materials

Stylish and classy – with safety in mind.

In care environments, the demands on furniture are particularly high. Apart from functionality and flexibility they have to meet a number of safety and hygiene requirements, while simultaneously satisfying high aesthetic and design standards.

### EASILY KEPT CLEAN AND HYGIENIC

In the field of care, strict hygiene principles apply as a matter of course. Detachable and washable covers mean that upholstered furniture can be cleaned easily. Optionally, a moisture-repellent Eratex padding provides additional protection of the upholstery. For surfaces, particularly hard-wearing materials are used that also withstand aggressive cleaning agents and disinfectants.

Because of a weakened immune system and possible underlying medical conditions, older people are much more susceptible to infections. To avoid the transmission of infectious diseases and to maintain the residents' health, the demands on materials are high.

Colour examples



### NO COMPROMISE ON FIRE SAFETY

Social institutions such as old people's homes and hospitals are faced with growing requirements in terms of fire safety. This also applies to the furnishings. The fire behaviour of our materials and furniture is tested and assessed, and then the furniture is certified in accordance with the European EN standards regarding fire safety. Among others, the wood lacquers, powder coatings of metal surfaces and certain upholstery materials such as synthetic leather in the standard range comply with the fire regulations.

Standards for fire safety:  
ÖNORM B 3825 flame retardant  
ÖNORM A 3800-1 – Q1  
EN 1021-1/2







# Comfort – feeling at home.

”

Pieces of furniture are like fellow residents and have their own character. Therefore, they have to be chosen with care. The harmonious interplay of colours and materials creates places where people like to be. And where they can relax, regenerate and recover.

## A place to feel safe

Materials and objects with varying haptics will stimulate and activate. Wood feels good and familiar and conveys sustainability. Modern classics help to materialise memories and create a sense of familiarity and security. Comfortable fabrics are pleasant to the touch. All these elements easily create a warm ambience helping the residents to calm down and relax. Soft and smooth forms convey safety and ensure a sense of well-being. Comfort, however, must not be a luxury.

## Comfortable in every respect: elastic covering

The ideal setting for comfortable living space is furniture that offers high levels of comfort. Wiesner-Hager is using a high-tech fabric of heavy-duty elastomer monofilaments and polyester yarns for premium seat upholstery. This fabric also acts as the seat suspension. It is thermally reinforced, and thus has high dimensional stability. The high elasticity of the elastomer ensures a quick memory effect: as soon as the material is relieved from strain the fabric returns to its original form.

Wiesner-Hager products with elastic covering:  
*alufarm\_3, grace, S13, sign\_2*



## Advantages of elastic covering:

- 01 Hard or soft spring effect depending on the load
- 02 Protects the foam material and increases its functional service life
- 03 Reduces folds in the seat upholstery
- 04 Comfortable seat shell with positive ergonomic effect on the posture
- 05 Very pleasant climate: breathable, avoids heat accumulation and promotes the discharge of moisture



View of seat underside with elastic covering





© photogenx.be



© Zorgcentrum Pennemes



# Rich in detail.

# Optional.



**Loudspeakers.**  
The loudspeakers integrated in the wing chair cannot only be used for relaxing entertainment, but also to support memory training, e.g. for people who suffer from dementia. Music and sounds from personal memories help to stimulate the senses in a very individual way, which creates positive feelings.



**Detachable seat.**  
The seat is detachable, which facilitates cleaning in inaccessible places such as the area between the seat and the back and armrests.



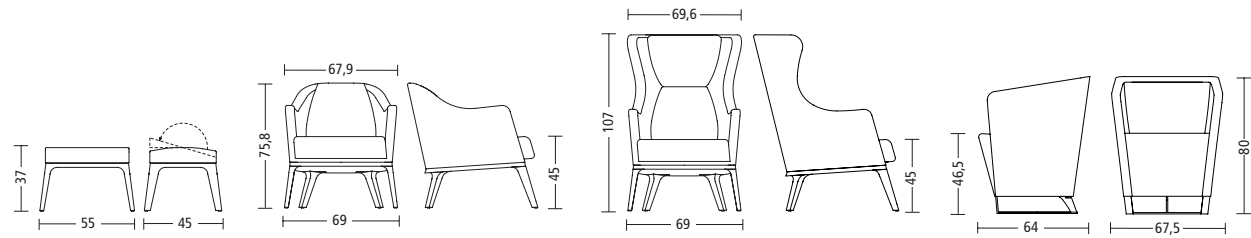
**Detachable seat cover.**  
On request, the seat cover can be detachable. Thus it can be washed easily and replaced without difficulty, if required. Seats with detachable covers are provided with impermeable Eratex padding.



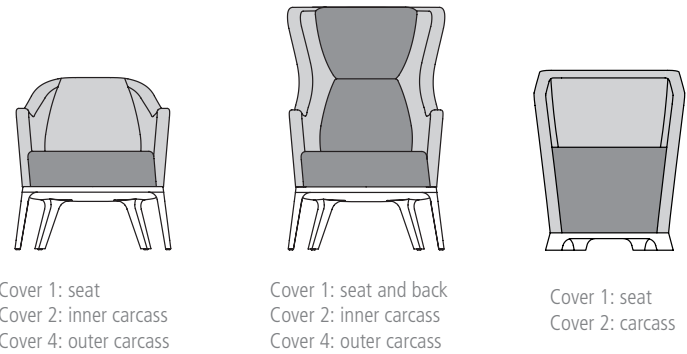
**Stool.**  
As an option, the stool can be fitted with a wedge-shaped cushion.



2124 Stool	2120 Club chair	2122 Wing chair	2131 Small lounge chair
Frame either beech or oak, fully upholstered	Frame either beech or oak, fully upholstered	Frame either beech or oak, fully upholstered	Metal frame, powder-coated, side parts upholstered



## Multi-coloured cover:



## Standard models:

**Club chair 2120:**  
Frame either beech or oak, plastic glides. Seat with elastic covering. Side parts upholstered. Seat detachable for easy cleaning. Stained wood surfaces.

**Wing chair 2122:**  
Frame either beech or oak, plastic glides. Seat with elastic covering. Metal plinth frame, powder-coated in black. Side parts upholstered. Seat detachable for easy cleaning. Stained wood surfaces.

**Stool 2124:**  
Frame either beech or oak, plastic glides. Stained wood surfaces.

**Small lounge chair 2131:**  
Metal frame, powder-coated. Seat and back with elastic covering. Side parts upholstered. Seat detachable for easy cleaning.

Optional: multi-coloured cover, seat cover detachable (with Eratex padding), back-rest with integrated loudspeakers (for model 2122), wedge-shaped cushion (for model 2124).

## Perfect Partners.



*macao lounge table*



*client*



*S13 bariatric*

A-4950 Altheim  
Linzer Strasse 22  
T +43 (7723) 460-0  
altheim@wiesner-hager.com

D-97080 Würzburg  
Schürerstrasse 3  
T +49 (931) 3 55 85-0  
wuerzburg@wiesner-hager.com

NL-6101 XB Echt  
Nobelweg 17  
T +31 (475) 41 02 22  
benelux@wiesner-hager.com

F-67201 Eckbolsheim  
13, rue Ettore Bugatti  
T +33 (3) 88 59 90 90  
F +33 (3) 88 59 90 89  
france@wiesner-hager.com

UK: Wiesner-Hager Ltd.  
london@wiesner-hager.com

CZ-150 00 Praha 5  
Drtinova 557/10  
T +420 271 730 444  
praha@wiesner-hager.com

Certified acc. to:  
ISO 9001, ISO 14001  
and ISO 14025