



veron



Better living in the office.

veron has a modern, simple design, but its lines are smoother and rounder than usual. Metal surfaces are used sparingly, with the focus on attractive colours and materials which transform the office environment into an invigorating place to work and communicate. Its extraordinary flexibility of configuration makes the *veron* table series a real all-rounder, suitable for one-person, two-person or team offices, for fixed or non-territorial workplaces, as well as for meeting rooms and other collaborative spaces.





veron is the answer to the growing wish to offset the technology-dominant look so often seen in modern office architecture. The privacy screen gives the workplace a comfortable and homely atmosphere. The accessory panel is available in the variants *basic* and *light*. The slim four-leg frame positioned at the outer corners of the tables offers the user maximum leg room, even on the narrow sides. Thanks to its clever design and judicious choice of materials, *veron* offers complete integration of today's technology and creates an attractive workplace that puts people at their ease.





Flexible and elegant.



The *veron* range also comprises large format tables and high tables in a variety of attractive finishes. Thanks to this and a comprehensive range of easy to configure options, including technology integration, *veron* is also perfect for use in conference rooms.



Rich in detail.

Optional.

The **accessory panel light** (optional) is a fabric-covered panel in lightweight construction. The fleece made of mechanically and thermally bonded polyester consists of up to 70 % recycled material. It is suitable for use as a pinboard, and sound-absorbing.



CPU holder.
The CPU holder houses the PC underneath the table top.

Table height.
Desks are available with a fixed height of 760 mm or optionally with an incrementally adjustable working height from 620 to 850 mm in compliance with EN norms.



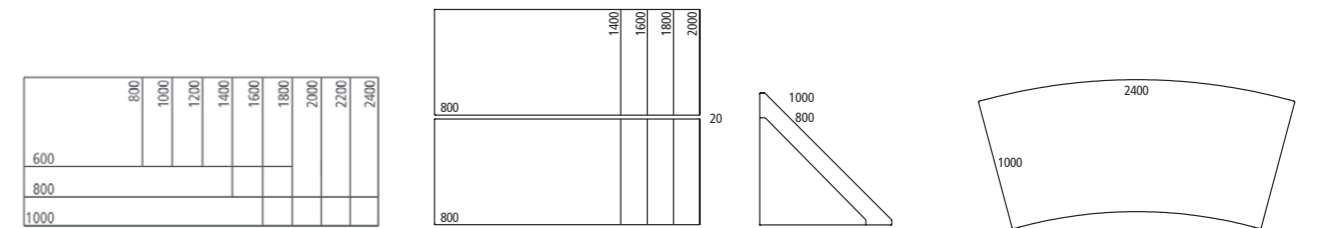
Accessory panel basic.
Fabric-covered panel also available including modesty panel.



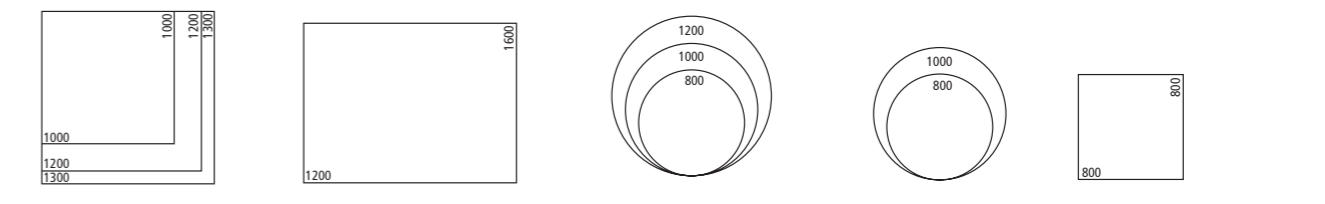
Cable box.
Cable box with cover flap to accommodate multiple socket outlets for easy plugging in at table-top level.



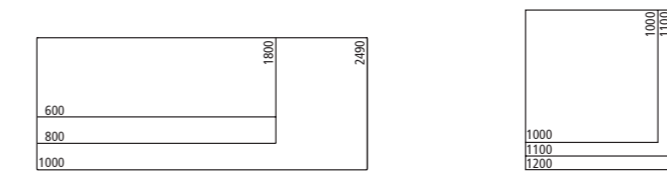
Cable channel.
The cable channel below the table-top can be folded down, thus facilitating access to the electric cabling.



Work table Height 740 | Dual workspace Height 740 | Slot-in leaf | Work table Height 740



Meeting table Height 740 | Meeting table Height 740 | Meeting table Height 740 | Meeting table Height 700-1110 gas-lift height adjustment | Meeting table 1900T64 Height 700-1100 gas-lift height adjustment



High table Height 1120 | High table Height 1120

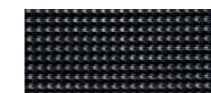
Height of tables:



Work tables | Meeting tables | High tables

Dimensions in mm

Mesh – modesty panel



S7785 black



S7786 silver



S7787 off-white

Design:

Table top: choice of laminate (MFC) or HPL top with seamless, moisture resistant laser edge (ABS edge), veneers with laminated wood edge, or compact top. Wood surfaces stained.

Frame: tubular steel legs and plinth, die-cast aluminium corner links. Metal surfaces powder-coated (meeting tables 1900T60 and 1900T61 only 55 eloxal silver, 1900T62 to 1900T64 55 eloxal silver, 38M anthracite and 9016 white).

Accessories:

Accessory panel light (optional): Fabric-covered panel in lightweight construction. Mechanically and thermally bonded polyester fleece (up to 70 % recycled material), suitable for use as a pinboard, and sound-absorbing (acoustic measurement according to ISO 354). Attached to the table top with a metal clamp and handwheel.

Height 410 mm (table top edge – top edge accessory panel).
Important note: Cannot be combined with a modesty panel.

Accessory panel basic (optional): decorative laminate with fabric-covered panel, also available including modesty panel.
Height 406 mm (table top edge – top edge accessory panel).

Modesty panel (optional): steel frame covered with semi-transparent fabric.

Linking devices (optional): for lateral and cross linking; 2 linking devices required per table side.

Electric cabling (optional): cable grommets round and square, cable duct square, hinged cable channel.

Perfect Partners.



delv



poi



paro_2

A-4950 Altheim
Linzer Strasse 22
T +43 (7723) 460-0
altheim@wiesner-hager.com

D-97080 Würzburg
Schürerstrasse 3
T +49 (931) 3 55 85-0
wuerzburg@wiesner-hager.com

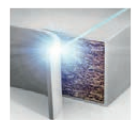
NL-6101 XB Echt
Nobelweg 17
T +31 (475) 41 02 22
benelux@wiesner-hager.com

F-67201 Eckbolsheim
13, rue Ettore Bugatti
T +33 (3) 88 59 90 90
F +33 (3) 88 59 90 89
france@wiesner-hager.com

UK: Wiesner-Hager Ltd.
london@wiesner-hager.com

CZ-150 00 Praha 5
Drtinova 557/10
T +420 271 730 444
praha@wiesner-hager.com

Certified acc. to:
ISO 9001, ISO 14001
and ISO 14025



LASERKANTE
LASER EDGE

